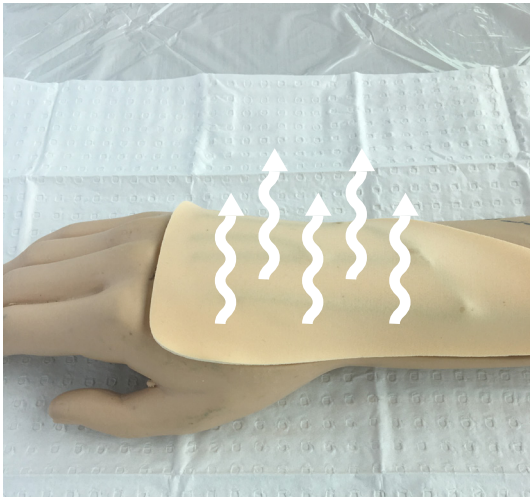


INTROCAN SAFETY 3 CORRECT DRESSING APPLICATION

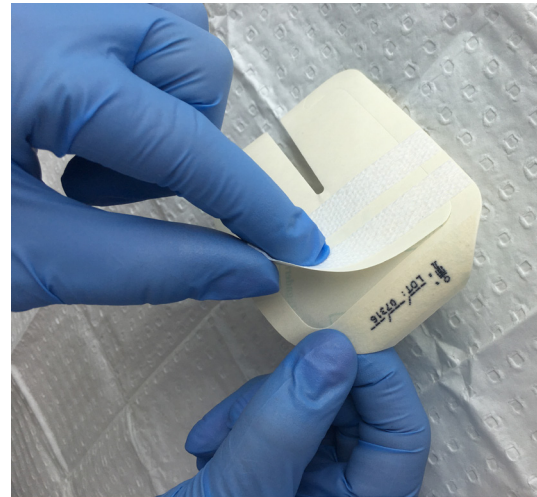


1 Preparation

- Prepare intended insertion site according to facility protocol.

2 Dry

- Allow area to air dry completely



3 Prepare Dressing

- Peel open the package.
- Remove sterile dressing.
- Remove sterile securing strips from dressing frame.



4 Fixing Cannula

- Place tape strips vertically over cannula wings to aid stability.



5 Apply Dressing/Documentation

- Place clear window dressing over cannula ensuring insertion site is visible
- Smooth dressing onto skin for optimal adhesion.
- Record information on date label.
- Apply date label on edge of dressing.